

KEY PLAN

ARCHITECTURE
RISEPONTE
CONTACT CHRIS STABBER
206 N HARRISON ST. UNIT 101
ALCONTO, IL 60110
P 630.590.8857
WWW.RISEPONTE.COM

GENERAL CONTRACTOR
AA ANDERSON
CONTACT CHRIS MORRIS
136 E RICH BLVD
ELIZABETH CITY, NC 27809
P 252.342.8171
WWW.AANDERSON.COM

CIVIL ENGINEERING
EASTERN CAROLINA CONSTRUCTION
CONTACT BRADLEY ROBEY
134 US HWY 108 E
CAMDEN, NC 27805
P 252.621.3570
WWW.EASTERNCAROLINAENGINEERING.COM

STRUCTURAL
TOWER PINKSTER
CONTACT SAILEY RAMLER
4 FULTON ST. E 800
GRAND RAPIDS, MI 49503
P 616.541.6225
WWW.TOWERPINKSTER.COM

MECHANICAL
TOWER PINKSTER
CONTACT DENVER WESSELS
4 FULTON ST. E 800
GRAND RAPIDS, MI 49503
P 616.541.6225
WWW.TOWERPINKSTER.COM

ELECTRICAL
TOWER PINKSTER
CONTACT CHAD NICHOLSON
4 FULTON ST. E 800
GRAND RAPIDS, MI 49503
P 616.541.6225
WWW.TOWERPINKSTER.COM

PLUMBING
TOWER PINKSTER
CONTACT DENVER WESSELS
4 FULTON ST. E 800
GRAND RAPIDS, MI 49503
P 616.541.6225
WWW.TOWERPINKSTER.COM

AUDIO-VIDEO-LIGHTING-ACOUSTICS
LIFESPACE
CONTACT JEFF HENRY
480 STARK ST SE
GRAND RAPIDS, MI 49504
P 616.572.8541
WWW.LIFESPACE.COM

INFORMATION TECHNOLOGY
INTULISE
CONTACT CHRIS STEB
15 FORDSHIRE DR
LANCASTER, PA 17601
P 717.786.0385
WWW.INTULISE.COM

NO. DESCRIPTION ISSUE DATE

A. ISSUED FOR PERMIT 2024.03.13

B. ISSUED FOR 95% CD 2024.04.30

C. ISSUED FOR 100% CD 2024.05.15

D. ISSUED FOR 100% CD 2024.06.01

E. ISSUED FOR 100% CD 2024.06.15

F. ISSUED FOR 100% CD 2024.06.30

G. ISSUED FOR 100% CD 2024.07.15

H. ISSUED FOR 100% CD 2024.07.30

I. ISSUED FOR 100% CD 2024.08.15

J. ISSUED FOR 100% CD 2024.08.30

K. ISSUED FOR 100% CD 2024.09.15

L. ISSUED FOR 100% CD 2024.09.30

M. ISSUED FOR 100% CD 2024.10.15

N. ISSUED FOR 100% CD 2024.10.30

O. ISSUED FOR 100% CD 2024.11.15

P. ISSUED FOR 100% CD 2024.11.30

Q. ISSUED FOR 100% CD 2024.12.15

R. ISSUED FOR 100% CD 2024.12.30

S. ISSUED FOR 100% CD 2025.01.15

T. ISSUED FOR 100% CD 2025.01.30

U. ISSUED FOR 100% CD 2025.02.15

V. ISSUED FOR 100% CD 2025.02.30

W. ISSUED FOR 100% CD 2025.03.15

X. ISSUED FOR 100% CD 2025.03.30

Y. ISSUED FOR 100% CD 2025.04.15

Z. ISSUED FOR 100% CD 2025.04.30

PROJECT NAME

TOWNE SOUTH CHURCH
2224 PEAR TREE RD.
ELIZABETH CITY, NC 27809

CURRENT ISSUE

ISSUED FOR 95% CD
2024.04.30

SHEET NAME

FRAMING ELEVATIONS

PROJECT NUMBER

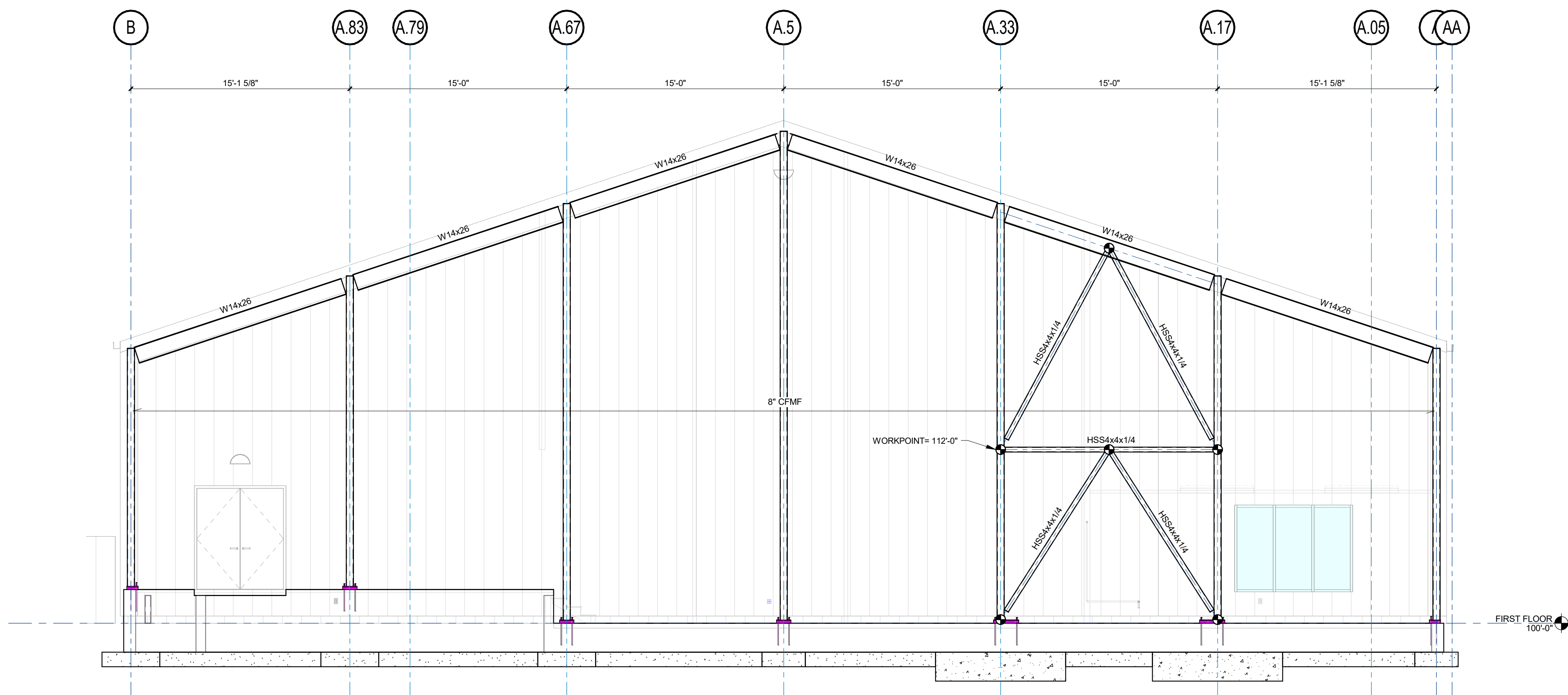
25-823

SCALE

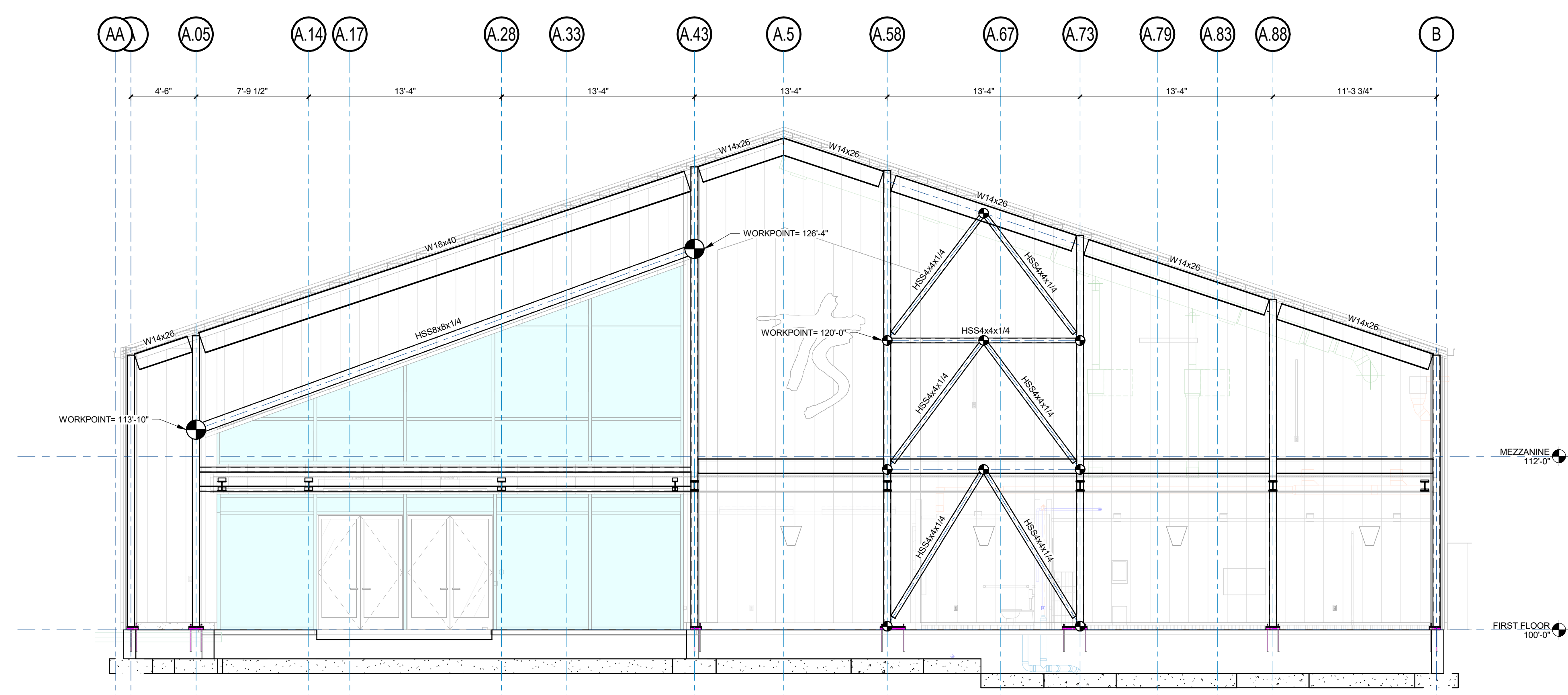
3/16" = 1'-0"

DRAWING NUMBER

S-501



1 NORTH FRAMING ELEVATION
3/16" = 1'-0"



2 SOUTH FRAMING ELEVATION
3/16" = 1'-0"